



## **OCTOPUS**

Maximum resistance  
in a minimum dimension



**VISOTTICA**  
GROUP

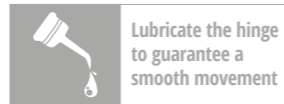
# OCTOPUS

Maximum resistance in a minimum dimension

Versatile spring hinge for metal, acetate and combination frames

**PATENTED**

COVERED BY INTERNATIONAL PATENT



## FEATURES

**STABLE PERFORMANCE**  
after frame adjustment

**SELF LOCK TROLLEY**  
easy to insert

**EASY TO SOLDER**  
on temple or wirecore

**2 JOINTS**  
stainless steel trolley

**ANTI ROCKING**  
high performance

**SOFT AND HARD SPRING**  
for different applications

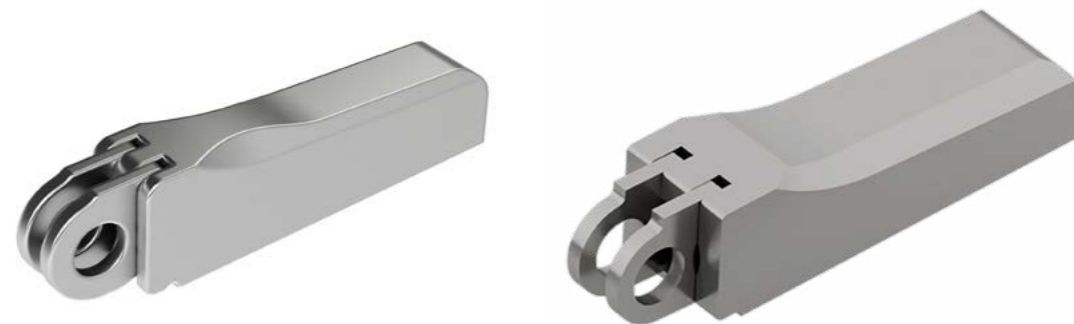
## PERFORMANCES

**WEAR RESISTANCE**  
over 50,000 open/close cycles

**ROCKING ANGLE**  
± 0.5°

**PULLING RESISTANCE**  
> 300 N

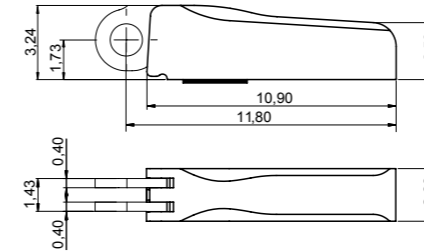
**BENDING RESISTANCE**  
min. 100 complete cycles ± 15°  
min. 10 complete cycles ± 30°



**PATENTED**

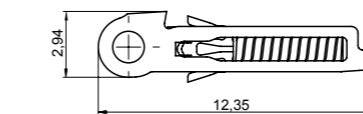
## OCTOPUS 2.3 · 5 joints

High Performance Spring Hinges and Wirecores for Metal, Acetate and Combination Frames



**BOX** 03SCCB032A1BYX

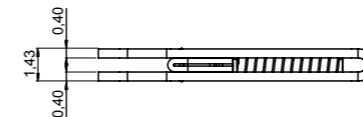
Material: **Nickel silver**  
WITH SOLDERING PATCH



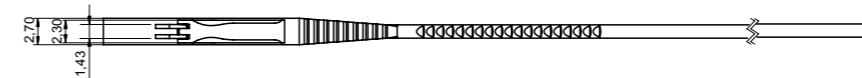
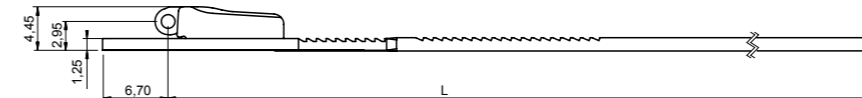
**SOFT TROLLEY** 07CRC9852A1BYX

**HARD TROLLEY** 07CRC9851A1BYX

Material: **Stainless steel**



## WIRECORES



## WIRECORE

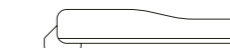
L 130 03WFCB069A130BNX

L 135 03WFCB069A235BNX

Material: **Nickel silver**

Trolley: **Soft Trolley**

Note: **Hard Trolley** available on request



**BARRELING CAP** 60CACB104A1WYX

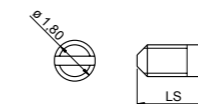
Material: **Plastic**

## SCREWS

### MINUS SCREW M1.40

LS 3.25 07VIC9500A1BYX

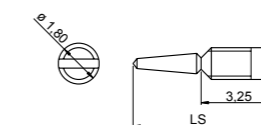
Material: **Stainless steel**



### SELF ALIGNING SCREW M1.40

LS 6.25 07VIC9499A1BYX

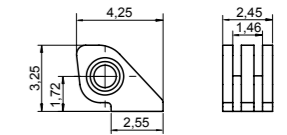
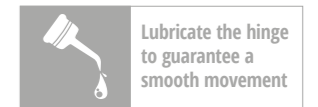
Material: **Stainless steel**



## ON REQUEST

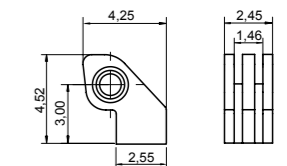
### 90° SOLDERING HINGE FOR COMBINATION FRAMES

Material: **Nickel silver**



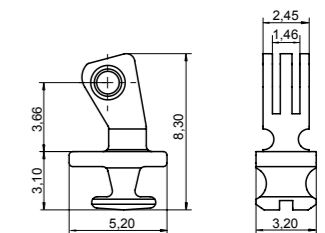
**SOLDERING HINGE** 03FRC9415A1BY0

Material: **Nickel silver**



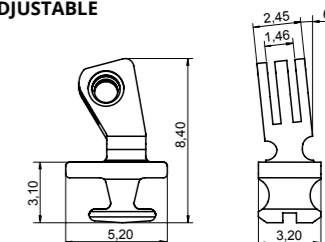
**STEP HINGE** 03FRC9416A1BY0

Material: **Nickel silver**



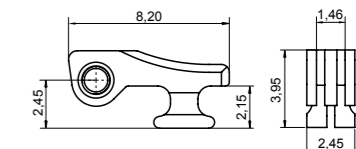
**90° INSERT HINGE** 03FRC9418A2BN0

Material: **Nickel silver**  
ADJUSTABLE



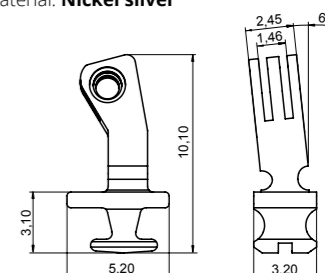
**90° INSERT HINGE** 03FRC9419A2BN0

Material: **Nickel silver**  
ADJUSTABLE 6° SLANTED ANGLE



**180° INSERT HINGE** 03FRC9417A2BN0

Material: **Nickel silver**



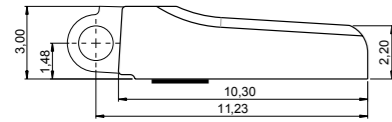
**90° INSERT HINGE** 03FRC9421A2BN0

Material: **Nickel silver**  
HIGH VERSION ADJUSTABLE  
6° SLANTED ANGLE

PATENTED

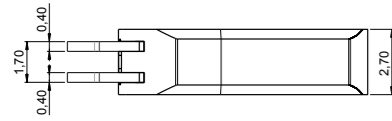
# OCTOPUS 2.7 · 5 joints

High Performance Spring Hinges and Wirecores for Metal, Acetate and Combination Frames



**BOX** 03SC62023000

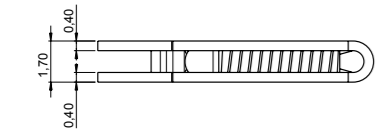
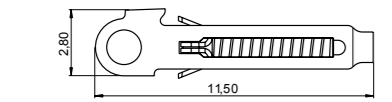
Material: **Nickel silver**  
WITH SOLDERING PATCH



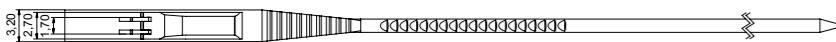
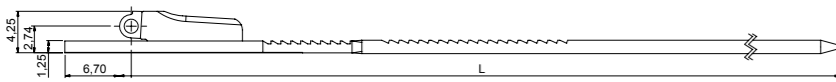
**SOFT TROLLEY** 07CR21602000

**HARD TROLLEY** 07CRB0251A1BYX

Material: **Stainless steel**



## WIRECORES



## WIRECORE

|       |                  |
|-------|------------------|
| L 130 | 03WFC7796A130BNX |
| L 135 | 03WFC7796A235BNX |

Material: **Nickel silver**  
Trolley: **Soft Trolley**

Note: **Hard Trolley** available on request



**BARRELING CAP** 09CA62231000

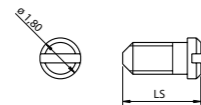
Material: **Plastic**

## SCREWS

### MINUS SCREW M1.40

LS 3.45 | 07V118034502

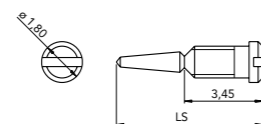
Material: **Stainless steel**



### SELF ALIGNING SCREW M1.40

LS 6.45 | 07V118064500

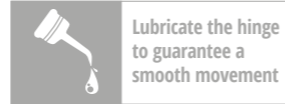
Material: **Stainless steel**



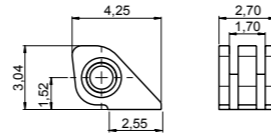
## ON REQUEST

### 90° SOLDERING HINGE FOR COMBINATION FRAMES

Material: **Nickel silver**

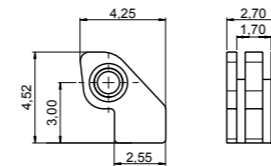


HINGES



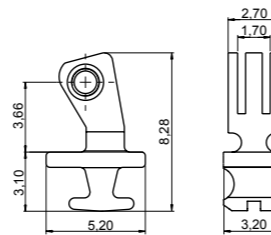
**SOLDERING HINGE** 03FR27220000

Material: **Nickel silver**



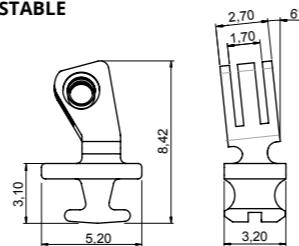
**STEP HINGE** 03FR27221000

Material: **Nickel silver**



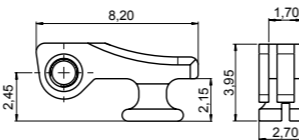
**90° INSERT HINGE** 03FRC5911A2BNO

Material: **Nickel silver**  
ADJUSTABLE



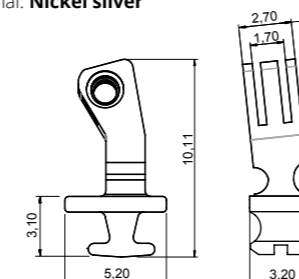
**90° INSERT HINGE** 03FRC5912A2BNO

Material: **Nickel silver**  
ADJUSTABLE 6° SLANTED ANGLE



**180° INSERT HINGE** 03FR27223000

Material: **Nickel silver**



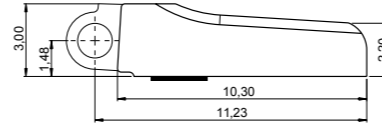
**90° INSERT HINGE** 03FRC5906A2BNO

Material: **Nickel silver**  
HIGH VERSION ADJUSTABLE  
6° SLANTED ANGLE

PATENTED

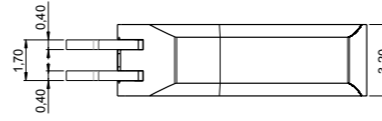
# OCTOPUS 3.2 · 5 joints

High Performance Spring Hinges and Wirecores for Metal, Acetate and Combination Frames



**BOX** 03SC62024000

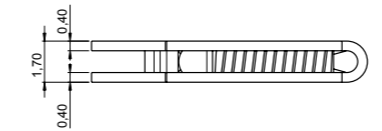
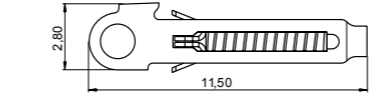
Material: **Nickel silver**  
WITH SOLDERING PATCH



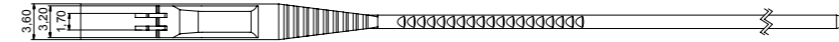
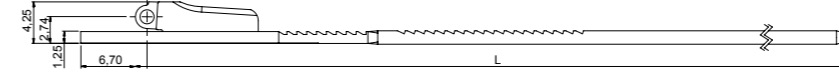
**SOFT TROLLEY** 07CR21602000

**HARD TROLLEY** 07CRB0251A1BYX

Material: **Stainless steel**



## WIRECORES



## WIRECORE

|       |                  |
|-------|------------------|
| L 130 | 03WFC7794A130BNX |
| L 135 | 03WFC7794A235BNX |

Material: **Nickel silver**  
Trolley: **Soft Trolley**

Note: **Hard Trolley** available on request



**BARRELING CAP** 09CA62232000

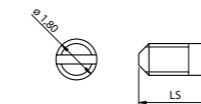
Material: **Plastic**

## SCREWS

### MINUS SCREW M1.40

LS 3.95 | 07V118039502

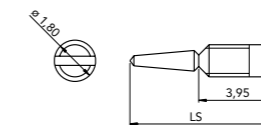
Material: **Stainless steel**



### SELF ALIGNING SCREW M1.40

LS 6.95 | 07V118069500

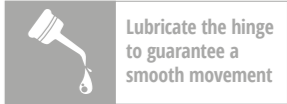
Material: **Stainless steel**



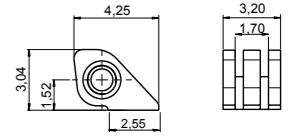
## ON REQUEST

### 90° SOLDERING HINGE FOR COMBINATION FRAMES

Material: **Nickel silver**

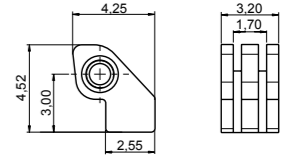


HINGES



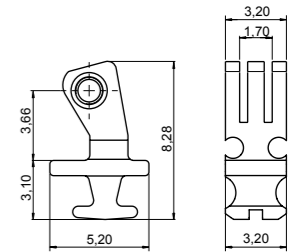
**SOLDERING HINGE** 03FR32220000

Material: **Nickel silver**



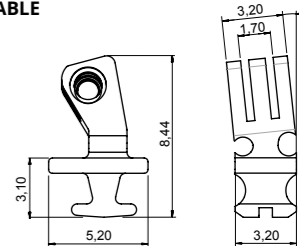
**STEP HINGE** 03FR32221000

Material: **Nickel silver**



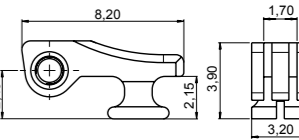
**90° INSERT HINGE** 03FRC5913A2BNO

Material: **Nickel silver**  
ADJUSTABLE



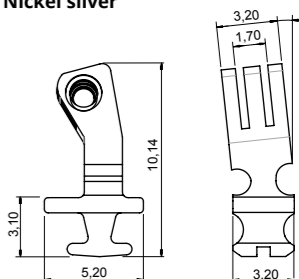
**90° INSERT HINGE** 03FRC5914A2BNO

Material: **Nickel silver**  
ADJUSTABLE 6° SLANTED ANGLE



**180° INSERT HINGE** 03FR32223000

Material: **Nickel silver**



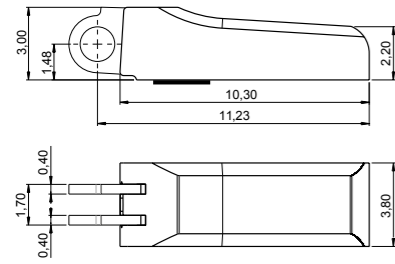
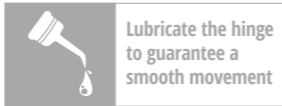
**90° INSERT HINGE** 03FRC5908A2BNO

Material: **Nickel silver**  
HIGH VERSION ADJUSTABLE  
6° SLANTED ANGLE

**PATENTED**

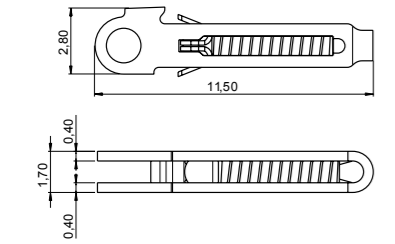
# OCTOPUS 3.8 · 5 joints

High Performance Spring Hinges and Wirecores for Metal, Acetate and Combination Frames



**BOX** 03SC62025000

Material: **Nickel silver**  
WITH SOLDERING PATCH

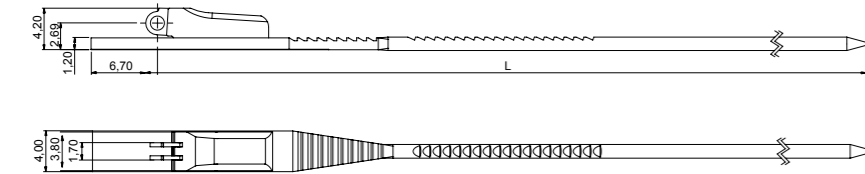


**SOFT TROLLEY** 07CR21602000

**HARD TROLLEY** 07CRB0251A1BYX

Material: **Stainless steel**

## WIRECORES



### WIRECORE

|       |                  |
|-------|------------------|
| L 130 | 03WFC7792A130BNX |
| L 135 | 03WFC7792A235BNX |

Material: **Nickel silver**  
Trolley: **Soft Trolley**  
Note: **Hard Trolley** available on request



**BARRELING CAP** 09CA62233000

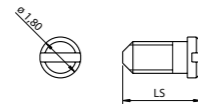
Material: **Plastic**

## SCREWS

### MINUS SCREW M1.40

|         |              |
|---------|--------------|
| LS 4.55 | 07V118045501 |
|---------|--------------|

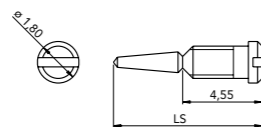
Material: **Stainless steel**



### SELF ALIGNING SCREW M1.40

|         |              |
|---------|--------------|
| LS 7.55 | 07V118075500 |
|---------|--------------|

Material: **Stainless steel**



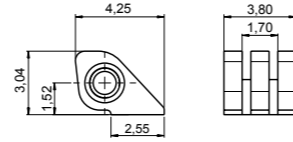
## ON REQUEST

### 90° SOLDERING HINGE FOR COMBINATION FRAMES

Material: **Nickel silver**

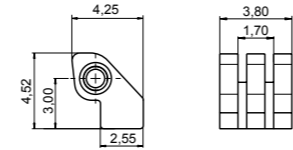


## HINGES



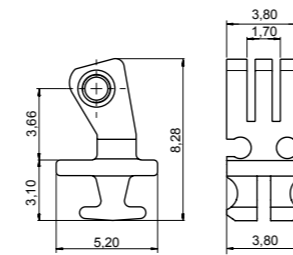
**SOLDERING HINGE** 03FR38220000

Material: **Nickel silver**



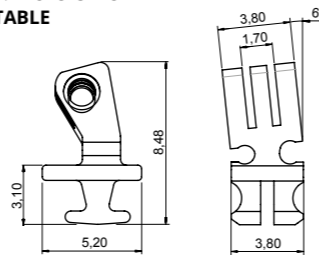
**STEP HINGE** 03FR38221000

Material: **Nickel silver**



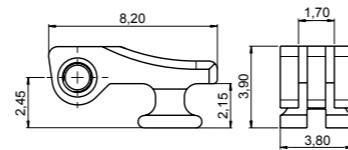
**90° INSERT HINGE** 03FRC5915A2BN0

Material: **Nickel silver**  
ADJUSTABLE



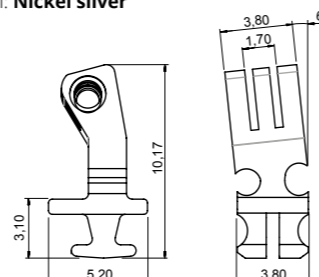
**90° INSERT HINGE** 03FRC5916A2BN0

Material: **Nickel silver**  
ADJUSTABLE 6° SLANTED ANGLE



**180° INSERT HINGE** 03FR38223000

Material: **Nickel silver**



**90° INSERT HINGE** 03FRC5910A2BN0

Material: **Nickel silver**  
HIGH VERSION ADJUSTABLE  
6° SLANTED ANGLE

sales@visotticagroup.com



DISCOVER THE DIGITAL PAGE



**Visottica Industrie S.p.a.**

Via Vecchia Trevigiana, 11  
31058 Susegana  
(Treviso), Italy  
Tel +39 0438 6551  
Fax +39 0438 450 855  
sales@visotticagroup.com

**O'Reilly Industrial Ltd.**

Rm 302, Shui Hing Centre,  
13 Sheung Yuet Road,  
Kowloon Bay, Kowloon, Hong Kong  
Tel +852 2796 6010  
Fax +852 2796 4631  
sales@visotticagroup.com

**COMOTEC Optical Products  
(Dongguan) Ltd.**

No. 23, Weijian Road,  
ChaShan Town, Dongguan City  
Guangdong Province, China 523380  
Tel +86 769 8233 9955  
Fax +86 769 8233 9977  
sales@visotticagroup.com

**Ookii S.r.l.**

Via Industrie, 3 Rasai  
32030 Seren del Grappa  
(Belluno), Italy  
Tel +39 0439 447 08  
Fax +39 0439 448 038  
sales@visotticagroup.com

**Matrix S.r.l.**

Via Industrie, 13 Rasai  
32030 Seren del Grappa  
(Belluno), Italy  
Tel +39 0439 448 388  
Fax +39 0439 448 217  
sales@visotticagroup.com

**Eurodecori S.r.l.**

Zona Artigianale 11  
32038 Quero Vas  
(Belluno), Italy  
Tel +39 0439 787 788  
sales@visotticagroup.com

**Ethos S.r.l.**

Via dell'Industria, 7  
31020 San Zenone degli Ezzelini  
(Treviso), Italy  
Tel. +39 0423 078257  
sales@visotticagroup.com

**Ideal S.r.l.**

Via A. Redusio, 6/8/10  
32038 Quero Vas  
(Belluno), Italy  
Tel. +39 0439 787200  
Fax +39 0439 787404  
sales@visotticagroup.com